



TAIWAN EXCELLENCE PAVILION

📍 EXPO XXI, Hall 1 Warsaw, Poland

▶ June 22-24, 2026



Product Brochure



TAIWAN EXCELLENCE

About Taiwan Excellence

Taiwan Excellence is a prestigious award from Taiwan, bestowed only upon a select handful of brands that represent the best made in Taiwan, recognized for their innovation and achievements. Organized by the Taiwan Administration of Trade (TITA), this award underscores the government's commitment to promoting outstanding Taiwanese industries on the global stage.

Each year, a cross-disciplinary team of jurors embarks on a mission to identify and select Taiwanese brands that are setting new standards in sustainability, design, R&D, quality, and marketing.

Over the years, Taiwan Excellence has evolved into one of the most sought-after and recognizable symbols worldwide, further solidifying Taiwan's reputation as a trusted global partner.



Exhibitors- Taiwan Excellence Brands

Smart Living



Smart Healthcare



eSports & AI Power



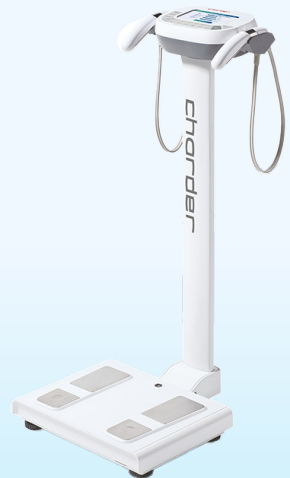


Charder Electronic Co., Ltd.

Founded in 1980, Charder Electronic Co., Ltd. has built its foundation on precision weighing technology and established its own brand, Charder Medical. With decades of expertise in professional medical weighing solutions, the company has successfully entered the EU medical market and serves customers in over 40 countries worldwide, earning a strong reputation as a trusted global medical equipment brand.

Body composition analyzer MA601

Fitness goes beyond appearance and weight. Trainers and athletes need precise data to understand muscle changes, fat loss, hydration, and progress focus. Charder introduces the MA601 Body Composition Analyzer to meet these advanced needs. With multi-frequency measurements, sophisticated algorithms, and over ten years of peer-reviewed research and clinical validation, the MA601 delivers reliable, professional-grade insights to elevate training programs and progress analysis.



[Learn More](#)



**Everlight
Chemical**



Everlight Chemical Industrial Corp.

Better Chemistry, Better Life. Founded in 1972, Everlight Chemical has evolved from a dye specialist into a global leader in advanced chemistry. With 50 years of innovation, we offer world-class solutions across five key sectors: Color, Specialty, Electronic, Pharmaceutical Chemicals, and Toners. We are dedicated to partnering with clients to create sustainable value through professional expertise and high-performance products.

Everzol® CS Series - Earth Tone Reactive Dye for Cotton

**Everzol® Yellow CS/ Orange CS/ Red Brown CS/
Olive CS / Grey CS**

Everzol® CS: Next-Gen Sustainable Earth Tone Dye. Patented single-component dyeing solution for sensitive earth tones, replacing traditional trichromatic mixing to boost right-first-time success to 90% with exceptional fastness and maximized water and energy savings.

[Learn More](#)



Innergie



Delta Electronics, Inc.

As a global leader in power and thermal management technologies, Delta fulfills its mission "To provide innovative, clean, and energy-efficient solutions for a better tomorrow" by advancing smart energy-saving solutions.

100W Dual USB - C Premium PD Charger - Changeable

GP.BAG11.07U

- Simultaneously fast charging two laptops or fast charge a laptop and a smartphone.
- Upgraded with GaN, supports PD3.0 (PPS), QC5, Samsung SFC 25W fast charge protocol.
- Unique Innergie 3 Fast Charge Modes. Allocate power at highest efficiency.
- 75% PCR plastic material. Best choice to reduce charging footprint.
- Made by global power expert, Delta Electronics.



[Learn More](#)

Innergie



Delta Electronics, Inc.

Innergie 400Wh 195W Mobile Power Station (400Wh) BEA400B120DZ-AA

(P400)

- Massive 400Wh (23200mAh*) battery with 195W output can power up to 4 laptops simultaneously
- Ultra-fast PD 3.0 charging with one 60W USB-C port and three 45W USB-C ports



[Learn More](#)

Innergie



Delta Electronics, Inc.

45W Dual USB - C Premium PD Charger - Changeable

ADP-45KW WTA

- 45W Dual USB-C (Type C) Charger
Dual USB-C ports with
- Dynamic Power Allocation: Auto
detects and calculates the power
needed for your device
- Reversible Fast Charge USB-C
Ports, no more fumbling over ports
- PD Fast Charge, customize your
charge for different device
- EU single Plug - Work with World
Travel Plug Kit for 150+ countries



[Learn More](#)

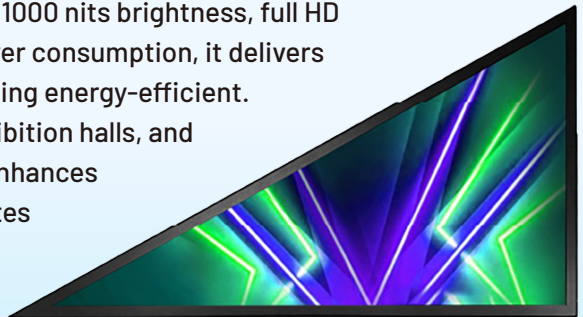


Litemax Electronics Inc.

Founded in 2000, Litemax specializes in high-brightness LCD panels and industrial displays, embodying exceptional Made-in-Taiwan quality. Our products serve marine, military, medical, digital signage, gaming, and industrial computing applications across more than 60 countries worldwide. Looking ahead, Litemax places AI at its core, advancing system integration and vertical market solutions.

32" Triangle Display SSD3205-A

The 32" triangle display SSD3205-A breaks visual boundaries with its innovative geometric design, allowing flexible multi-shape or radial screen configurations. With 1000 nits brightness, full HD resolution, and 37W low power consumption, it delivers striking visuals while remaining energy-efficient. Ideal for digital signage, exhibition halls, and commercial advertising, it enhances brand exposure and captivates audiences with both creativity and impact.



[Learn More](#)



Litemax Electronics Inc.

42.2" Ultra - Wide Display SSD4220-Y

The 42.2" ultra-wide display SSD4220-Y features a 16:4 wide aspect ratio, 2500 nits LED backlight, 1920×480 resolution, 178° wide viewing angles, and high-contrast visuals. Its low-power, long-lifespan design ensures reliable, sunlight-readable performance, ideal for digital signage, transportation advertising, and exhibition applications.

[Learn More](#)





Mecom Industries Corp.

MCM is the only plant-based cutting fluid manufacturer in Asia with integrated R&D, production, and manufacturing. Its products have received the Taiwan Excellence Award in 2019, 2023, 2025, and 2026, as well as Innovation Research Awards. MCM cutting fluids offer a service life of 5–10 years, extend tool life by 30–50%, and deliver clean, eco-friendly, low-mist, and easy-to-manage performance.

MCM SUPERSOL

SUPERSOL 5500BC / 56HP / 57HP

MCM SUPERSOL 5500BC / 56HP / 57HP is a high-performance plant-based metalworking fluid for aerospace, medical, and semiconductor applications. Using advanced synthetic plant esters, it is biodegradable and resists microbial growth without biocides. Service life reaches 3–5 years—over four times longer than conventional fluids—while reducing PM1, PM2.5, and PM4 emissions by 35–60%. It delivers superior stability, cleanliness, and machining results, trusted by HIWIN, EVA Aerospace, NCSIST, SOLAR, and ASE Group, and widely featured in major Asian business media.



[Learn More](#)



Mecom Industries Corp.

MCM G2 SUPERSYN

SUPERSYN 900AL/920AL/800SX/280EX

Product Features: The MCM G2 SUPERSYN plant-based metal cutting fluid has successfully addressed the instability of the first-generation product, which was limited to regional direct sales and required intensive maintenance. Through chemical modification and esterification, the product has been completely transformed—achieving over 90% biodegradability along with a well-balanced functional profile. With proper management, its service life can reach 5 to 10 years, demonstrating outstanding durability and stability. This is an environmentally friendly, climate-conscious green energy innovation.

Innovation Value:

1. Maintain a leading position in technology and expand the technological gap with competitors
2. Gain pricing power and market influence
3. Leverage environmental trends to drive net profit
4. A leading brand of plant-based metal cutting fluid with 0% mineral oil content



[Learn More](#)



Sauber Technology Ltd.

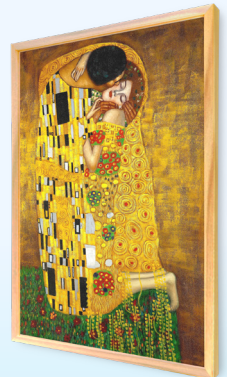
Founder Gary established Saab Technology in 2016, aiming to address the issues of bulky size, expensive filters, and short lifespan in air purifiers on the market. Collaborating with experts of various specialties, they developed an efficient, energy-saving, aesthetically pleasing, and affordable air purifier.

Picture Frame Wall-mounted UVC Disinfection Air Purifier

FLAT-ULTRA

Introducing FLAT™ – the ultimate fusion of art and technology in air purification. This sleek, 9cm thin photo frame air purifier doesn't just adorn your walls; it transforms them into a masterpiece while silently cleansing the air 24/7.

Beyond its stunning design, FLAT™ boasts cutting-edge features like patented aerodynamic technology and ClogSense™ air volume decline detection. With its long-lasting filter and smart app integration, FLAT™ ensures optimal performance and provides real-time air quality monitoring.



[Learn More](#)

•tokuyo



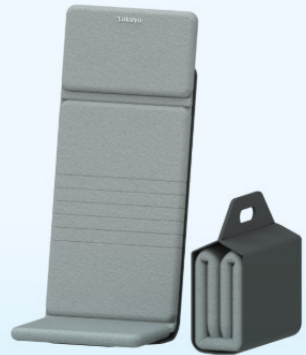
tokuyo Biotech Co., Ltd.

Founded in Taiwan, tokuyo is a leading massage chair brand dedicated to promoting everyday wellness through innovation and technology. Rooted in the spirit of craftsmanship and integrity, tokuyo combines world-class R&D, intelligent design, and rigorous quality control to create products that deliver comfort, energy, and relaxation to people around the world.

Portable Backrest Cushion

TH-525

- Foldable and lightweight design for easy portability anytime, anywhere
- Professional massage mechanism recreates the feel of real hand massage
- Ergonomic back massage system delivers full-back relaxation and comfort
- Flexible massage cushion fits perfectly on chairs, sofas, and office seats
- Spot massage function targets muscle tension and fatigue precisely
- Built-in heating function provides soothing warmth and enhanced relaxation
- Ideal for home, office, or travel use
- Compact design with premium comfort for everyday wellness



[Learn More](#)

tokuyo



tokuyo Biotech Co., Ltd.

Sonic Hot & Cold Eye Massager TS-187

- Hot & Cold Therapy
Relieves eye fatigue and tension
- 3D Sonic Vibration
Targeted acupoint massage with precision
- Temple Air Compression
Comfortable, human-like kneading
- Four Massage Modes
Varied and relaxing massage experiences
- Voice Guidance Control
Easy and intuitive adjustment
- User-Friendly Visual Design
Clear, thoughtful, and convenient

[Learn More](#)





Vinxper Life CO., LTD.

We were the original inventors of the "World's First Electric Wine Aerator" and has won multiple international design awards and garnered global media coverage. In 2023, we established a new wine accessories brand [Vinxper] with a focus on providing consumers with simple and effective innovative products.

Vinxper Expert - The World's 4th Gen Adjustable Electric Wine Aerator

VX8-UG / VX8-US

Vinxper Expert (VX8-U) is the world's first adjustable electric wine aerator that can accurately and freely adjust the 0-240mins wine decanting effect (suitable for most wines). The exclusive adjustable aeration patent allows the world's wines to be decanted without waiting.

[Learn More](#)





Acer Inc.

Founded in 1976, Acer is one of the world's top technology companies with a presence in more than 160 countries. The company continues to evolve by embracing innovation across its offerings, which include computers and displays, while branching out to new businesses. Acer is also committed to sustainable growth, exploring new opportunities that align with its environmental and social responsibilities. The Acer Group employs nearly 12,000 employees that contribute to the research, design, marketing, sales and support of products, solutions, and services that break barriers between people and technology.

Predator ES Thunder

- Powerful 500W Rear Motor with Advanced eSystem
- Dual Disc Brakes & Precision Suspension Control
- Up to 40 km/h Speed with Long-Range Battery
- High-Traction Off-Road Tires for Rough Terrain
- Acer eMobility App with Smart eLock Features

[Learn More](#)



acer



Acer Inc.

Predator ES Strom Pro

- Powerful 500W Rear Hub Motor
- Advanced eSystem & Predator TCS
- Up to 60 km Range with Regenerative Braking
- 4 Riding Modes with High-Torque Performance
- Acer eMobility App with eLock & Smart Tag Support

[Learn More](#)



acer



Acer Inc.

Acer Nitro ES Series 3 Select

- Powerful 350W Rear Hub Motor
- Advanced eSystem with eABS Braking
- Foldable Design with IPX5 Water-Resistance
- Up to 40 km Range with 3 Riding Modes
- 18 Nm Torque with 20% Climb Capability

[Learn More](#)



ADTEK



ADTEK ELECTRONICS Co., LTD.

Founded in 1990, ADTEK Electronics bridges Analog and Digital technologies. Focused on measurement and communication, we transform signals into actionable data through integrated energy management solutions. Serving Industrial IoT and smart energy applications in over 40 countries, ADTEK empowers carbon management and accelerates a sustainable, intelligent EIoT future.

Multifunction Power Analyzer

CPM-80

CPM-80 delivers high-accuracy single and three-phase power measurement with advanced power quality analysis up to 63rd harmonic. It features waveform capture, event logging, TOU billing, and CO₂ emission monitoring, with expandable I/O and RS-485 or Ethernet Modbus communication. Its large LCD and 4MB memory support long-term smart energy monitoring and management.



[Learn More](#)

ADTEK



ADTEK ELECTRONICS Co., LTD.

Multifunction Power Analyzer ADP-30

The ADP-30 Series Multifunction Power Analyzer provides high-accuracy single and three-phase power monitoring with RS-485 Modbus RTU communication. It measures voltage, current, power, energy, harmonics, and CO₂ emissions, while supporting TOU, data logging, DI/DO control, and optional Ethernet Modbus TCP. Ideal for smart energy management in commercial, industrial, and residential applications.



[Learn More](#)



ADTEK ELECTRONICS Co., LTD.

Multifunction Power Meter (DIN rail)

CPM-12D

CPM-12D is a compact DIN rail multifunction power meter providing high-accuracy True RMS measurement for single and three-phase systems. It monitors V, I, P, Q, and energy parameters with RS-485 Modbus RTU communication and LCD display for easy configuration. Suitable for industrial automation, energy management, and smart building applications.



[Learn More](#)

ADTEK



ADTEK ELECTRONICS Co., LTD.

Universal Process Conditioner (22.5mm)

UC1

UC1 Universal Process Conditioner is a compact signal isolator supporting 0(4)-20mA, 0-10V, thermocouple, and RTD inputs with fully programmable configuration via LCD and buttons. It offers analogue output, relay, or RS-485 Modbus RTU options, with input/output isolation, pluggable terminals, and flexible compensation settings for versatile industrial signal conditioning applications.



[Learn More](#)



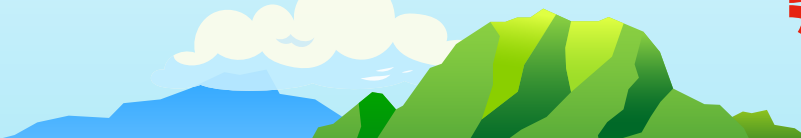
ADTEK ELECTRONICS Co., LTD.

Multi-Circuit Power Meter (DIN rail)

AEM-DRB

AEM-DRB is a compact multi-loop power meter with 30-channel measurement, supporting DIN rail installation with clamp-on CTs for easy retrofitting. It enables flexible 1P/3P configuration, THD and 31st harmonic analysis, TOU billing, and data logging. With RS-485 Modbus, expandable communication, and dual isolated inputs, it is ideal for advanced energy monitoring and cost allocation systems.

[Learn More](#)



ADTEK



ADTEK ELECTRONICS Co., LTD.

APM series Remote I/O Module APM-PR

APM Series Remote I/O Modules are compact industrial data acquisition devices designed for distributed monitoring of temperature, voltage, current, and AC/DC power parameters. They support modular digital I/O expansion with RS-485 Modbus RTU as standard and optional Ethernet or WiFi communication.

Featuring 17.5mm slim DIN-rail design, push-in terminals, LED diagnostics, and isolated architecture, they enable flexible, high-density and reliable industrial monitoring systems.



[Learn More](#)

ADTEK



ADTEK ELECTRONICS Co., LTD.

Multi-Circuit Power Meter (DIN rail)

APM-EMA

APM-EMA series is a modular multi-circuit power meter supporting up to 108 single-phase or 36 three-phase circuits when expanded with up to five APM-MAA modules. It features DIN rail installation, RS-485 Modbus RTU communication, push-in terminals, and isolated modular design for flexible, high-density energy monitoring in space-limited applications.

[Learn More](#)



ADTEK



ADTEK ELECTRONICS Co., LTD.

Current Input Model (Optional) APM-MAA

[Learn More](#)



AROMASE



Macrohi CO., Ltd.

Founded in 2003, MacroHI has more than 80 employees and its founder- Mr. Eric Chen is the 3rd generation of professional hair products manufacturer.

Based on more 60+ years experience in hair product research and development, MacroHI determined to focus on "brand" and "R&D" when it was founded. In 2004, MacroHI invested in scalp research, creating scalp hair products, patented scalp examination software apps, publish scalp education textbooks, and establishing scalp care academ, dedicating to the scalp ecosystem.

5 α Juniper Scalp Purifying Liquid Shampoo GARSP2C0004

Reset your scalp. Let it Breathe & Grow. Most scalp problems start with buildup – excess sebum and residue that block hair follicles. Use as a pre-shampoo: apply to dry scalp before washing to deeply soften and lift buildup. 2% Glycyrrhetic Acid Complex restores a clean, balanced scalp environment. Co-developed with 100+ dermatologists. Free from SLS/SLES, parabens, and artificial coloring. Trusted by 4M users worldwide.



[Learn More](#)

AROMASE



Macrohi CO., Ltd.

AROMASE "3 steps-Home Scalpcare Solution" GARSP2C0004/GARSP2C0006/GARSC2C0003

AROMASE "3 steps-Home Scalpcare Solution" is a comprehensive scalp health management system. Three steps: Cleansing (Pre-Shampoo) → Washing (Daily Shampoo) → Care (Scalp Spray). Specially designed for those with problematic scalps that cannot be solved by regular household shampoo. Addressing everyone's individual scalp concern is the core value of AROMASE's 3-step scalp care approach.

[Learn More](#)



AROMASE



Macrohi CO., Ltd.

5 α Juniper Head-To-Toe Shampoo & Body Wash (for Face, Body & Scalp)

GARBS2C0001

One product for Face, Body, Hair & Scalp. Formulated with ECOCERT certified Sodium Usnate, ideal for all skin types including sensitive skin. Enriched with Glycyrrhetic Acid Complex 1% to relieve inflammation and itchiness. pH 5.5, amino acid-based, free from harsh chemicals and parabens. ECO-FRIENDLY design with 100% rPET packaging.



[Learn More](#)

DUMA BEAR

DUMA BEAR SPORTS CO.,LTD.

Driven by a passion for golf and a strong sense of social responsibility, DUMA BEAR GOLF is dedicated to developing internationally competitive equipment, focusing primarily on high-performance adult clubs. At the same time, we support the growth of the sport by extending our professional standards to tailored equipment for junior players.

DUMA BEAR HyperCell™

HyperCell™, designed by DUMA BEAR as "an organic extension of the player's body," meets modern golf market demands by integrating biomechanics, sustainable materials, and computational design. Utilizing 3D-printed titanium and recycled materials, this intelligent club successfully overcomes traditional limitations in weight, stability, and personalization.



[Learn More](#)



HEARTWAY



Heartway Medical Products Co., Ltd.

- HEARTWAY outstanding performance has been recognized in many fields and has won many awards in Taiwan & oversea includes 14 Taiwan Excellence Awards.
- HEARTWAY has expanded to a top medical rehabilitation equipment production and operation center in 2021.
- This center was opened in 2024.
- It will ensure that more innovative products to user.
- All products are 100% MADE IN TAIWAN.
- We also hope to make further progress in the medical industry to provide more comfortable products for senior citizens and the disabled.

Off-Road Power scooter

S43

- The unique and modern design is stunning.
- The all-new front/taillights and unique design enhance user safety.
- Adjustable steering height and handlebars provide greater comfort.
- Suitable for outdoor use.



[Learn More](#)





HEARTWAY



Heartway Medical Products Co., Ltd.

Portable power scooter

S19F+

- Convenient folding function and lightweight design to make easy storage, and suitable for travel. Small turning radius, suitable anywhere.
- Easy remove the battery cover for charge and install the battery quickly.
- Swivel seat and quick release seat for option to hit your needs.

[Learn More](#)



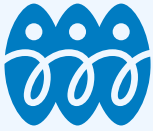


Makalot Industrial CO., LTD.

Smart heating vest

The Smart Heated Vest integrates intelligent temperature control and flexible heating technology. The product is lightweight, soft, and washable for repeated use, making it suitable for outdoor activities, commuting, and daily wear while balancing both comfort and functionality.

[Learn More](#)



MAKALOT



Makalot Industrial CO., LTD.

WIIMTEC cooling vest

WIIMTEC wearable cooling vest, the use of special cool-sensing materials and special processing to reflect near-infrared rays (NIR) and block ultraviolet rays to achieve better heat conduction and heat insulation.

[Learn More](#)





Makalot Industrial CO., LTD.

Dual-function massage belt

We are the market's first all-in-one belt integrating vibration, heating and IR therapy. It is designed for daily relaxation, prolonged sitting, and mobile use scenarios, allowing users to enjoy hands-free operation anytime and anywhere.

[Learn More](#)



Makalot Industrial CO., LTD.

Stytrix

Stytrix is a generative AI-powered creative tool tailored for the fashion industry. It transforms sketches and inspirations into high-quality garment designs, significantly accelerating the product development cycle and empowering creative workflows.

[Learn More](#)



MICROBASE[®]
MicroBase Technology Corporation



MicroBase Technology Corporation

MicroBase is a global leader in inkjet printhead technology and aerosol drug-delivery platforms. Since 1997, we have leveraged over 28 years of expertise in precision micromachining to provide end-to-end integrated services—encompassing R&D, regulatory compliance, and clinical testing. While spearheading inhalation therapies for respiratory care, we are actively pioneering next-generation solutions in exosome delivery and AI-driven respiratory actuation.

Loyalcare Nebulizer System MB05T01

- A global first in PI material inline aerosol drug delivery platform for use in ventilator inhalation therapy.
- Nebulizes up to 6ml of high-viscosity medication within 30 minutes, with automatic shut off to reduce unnecessary medication waste.
- Inline system design to prevent drug leakage during nebulization, enhancing drug utilization and reducing the risk of healthcare workers inhaling medication.



[Learn More](#)

MICROBASE[®]
MicroBase Technology Corporation



MicroBase Technology Corporation

GOCare Portable Nebulizer MB05009

- MMAD < 5 μ m for the treatment of lung diseases deep into the lower respiratory tract.
- Using 0.9 saline solution from the start of cold symptoms helps clear nasal passages, reduce mucus, and shorten illness.
- Let your Hands-Free, immerse yourself in the moment.
- Type-C power supply enables convenient treatment anytime, anywhere.



[Learn More](#)

aiseed.



aiseed Inc.

AISeed is a Taiwan-based AI drone company integrating AI chips with Taiwan's semiconductor industry. We develop wind-resistant, long-endurance drones for large-scale deployment, addressing high labor costs. Clients include Taiwan's Ministry of National Defense, with plans for U.S. and European expansion.

Autonomous AI SurveillAnce Drone

A02

The autonomous AI surveillance drone combines multi-rotor and fixed-wing features, enabling high-speed flight and wide-area coverage. Its core AI algorithms detect anomalies in real time, automatically returning or landing to reduce risks. The flight control system, integrated with edge AI and dedicated chips, enhances processing speed and lowers energy consumption, ensuring long-lasting, stable autonomous flight. Ideal for critical missions such as disaster relief and border patrol.

[Learn More](#)



aiseed.



aiseed Inc.

Autonomous AI SurveillAnce Drone A03

The Cyberdrone A03 combines edge AI with error-detection systems, rapidly processing images and sensor data while automatically detecting anomalies to enhance reliability and efficiency. Suitable for ISR missions, it targets military and public safety markets.

[Learn More](#)



ARBOR



ARBOR Technology Corporation

ARBOR is a global provider of dedicated industrial IoT computing and mobility solutions. ARBOR offers comprehensive system integration, customer-centric design services, embedded systems, automation products, and global logistics support. We cooperate closely with our partners to develop complete solutions for a wide array of applications across a diverse range of industries. Our mission is to enable an intelligent planet by providing mobility and embedded computing products that make working and living smarter. With ARBOR, there is no limit to how smart your business can be!

FPC-5211 Fanless Edge AI Computer

FPC-5211 Series

- Support for 14th Generation Core™ i9/i7/i5/i3 Processors (Raptor Lake-S Refresh)
- Up to 60W GPU MXM module expansion
- Fanless design with embedded heat pipe cooling solution
- E-Mark certified



[Learn More](#)



ARBOR Technology Corporation

ARES-1983H-AI Compact Fanless Computer ARES-1983H-AI Series

- Intel® 14th/13th/12th Core™ 35W Processors
- Pre-installed Memry X AI accelerator
- Fanless controller with Edge AI compatibility
- Supports 6 x USB & 3 x LAN
- Dual-Display for 1 x VGA and 1 x DisplayPort
- 2 x Internal USB 2.0 Type-A ports for HW License Key & Security Dongle
- Supports MemryX MX3 M.2 AI Accelerator Module, up to 24 TFLOPS
- Group-BF16 activations architected for higher accuracy than INT8



[Learn More](#)



ARBOR



ARBOR Technology Corporation

IP69K Waterproof Fanless Computer ARTS-7670 Series

- IP69K-rated dustproof and waterproof
- Intel® 14th/13th/12th-Gen. Core™ 35W/ 65W CPU
- Rugged -40°C to 70°C fanless operation
- 4 x PoE+ 2.5GbE ports via M12 X-coded with 100W power budget
- 1 x waterproof USB3.2 Type-C port support DisplayPort and USB3.2 dual output
- 2 x isolated CAN FD port via M12 A-coded
- 6 x USB 2.0, 1 x isolated RS-232 and 1 x isolated RS-422/485 ports
- 9V to 48V DC input with built-in ignition power control
- E-Mark certified & MIL-STD-810H Shock/ Vibration certified
- Support dTPM2.0 & Windows®11

[Learn More](#)





JIYONSON CO., LTD

BeanGo cube is a user-centric coffee roaster that combines every detail and thoughtful design with intelligent and advanced technology to meet professional and ease-of-use requirements. Enjoy the leisure lifestyle of a coffee master and satisfy your desires for exquisite coffee. Just follow BeanGo Cube into the specialty coffee world.

BeanGo Cube X Smart Coffee Roaster X01

Flexibly roast 100g small samples or up to 300g (perfect for ½ lb. coffee bags) – ideal for coffee shops, studios, and coffee enthusiasts.

Effortless Home Coffee Roasting

- Automatic crack sound detection for precise roast control
- Visual roasting profile records crack sound development
- Advanced sound recognition filters out environmental noise



[Learn More](#)

IPEVO



IPEVO Corporation

IPEVO is a leading brand specializing in intelligent communication technology.

We design innovative conferencing devices and document cameras with intuitive user experience. Our products and software applications enable business professionals and educators to co-create, work, teach, and collaborate remotely, seamlessly and efficiently.

TOTEM 360 Immersive Conference Camera + Speakerphone

CDCU-01IP

IPEVO TOTEM 360 is a complete audio-visual solution, providing immersive video modes for every scenario.

[Learn More](#)



IPEVO



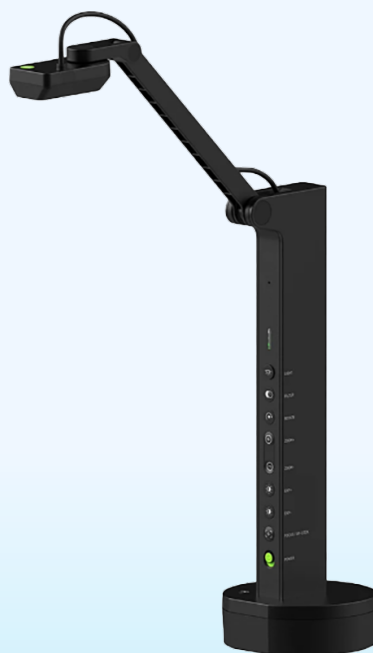
IPEVO Corporation

VZ-X ULTRA 13MP WIRELESS, HDMI & USB DOCUMENT CAMERA

CDVH-06IP

VZ-X ULTRA delivers 13MP image clarity and effortless, cable-free streaming to any USB or HDMI display.

[Learn More](#)



IPEVO



IPEVO Corporation

VurboCam 4K Vurbo.ai - Powered Webcam CDVU-16IP

The VurboCam 4K, delivers ultra-high-definition 4K video and features an omnidirectional microphone that captures crystal-clear audio for virtual meetings.

[Learn More](#)





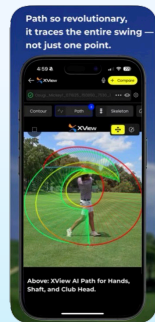
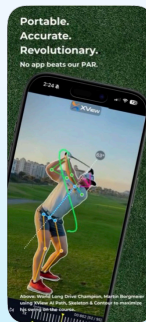
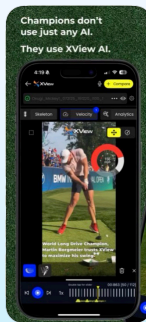
IdeasLab, Formosa.

IdeasLab Formosa is an AI and computer vision company creating Motion Intelligence platforms for sports, healthcare, and fitness. Combining advanced vision with biomechanics, we transform human movement into actionable insights, empowering athletes, coaches, and organizations with accessible tools for smarter training and performance development.

Xview AI

XView AI is an AI-powered motion analysis platform built for golfers. Combining biomechanically informed movement assessment with sport-specific intelligence, it delivers clear, actionable insights and real-time feedback. Designed for athletes and coaches, XView AI delivers objective feedback, AI-powered coaching, and actionable insights to refine technique, accelerate skill development, and improve performance.

[Learn More](#)





Micro-Star International Co., Ltd

Micro-Star International Co., Ltd. (MSI), founded in 1986 and headquartered in New Taipei City, Taiwan, is a leading global computer hardware and electronics company. MSI designs and manufactures laptops, motherboards, graphics cards, desktops, servers, and peripherals, with a strong presence in gaming, content creation, and AIoT markets, serving customers in over 120 countries worldwide.

Laptop

Titan 18 HX AI A2XWIG-477PL

The Titan 18 HX AI features a powerful Intel Core Ultra 9 285HX CPU paired with NVIDIA GeForce RTX 5090 graphics, delivering desktop-level performance for gaming and content creation. It boasts an 18" UHD+ Mini LED 120Hz display, up to 6 TB NVMe SSD storage, and advanced MSI OverBoost Ultra cooling technology. With Cherry mechanical RGB keyboard, Wi-Fi 7, and Thunderbolt 5 connectivity, this flagship laptop combines premium hardware and expandability for enthusiasts and professionals seeking top-tier mobile performance.



[Learn More](#)



Zykel Networks

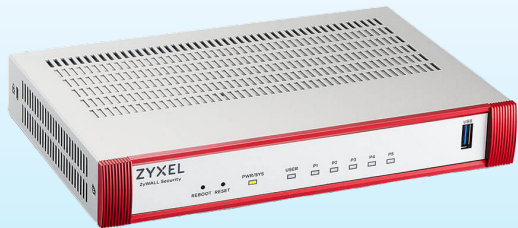
Zykel Networks is a leading provider of secure, AI-powered cloud networking solutions for SMBs and the enterprise-edge. We deliver seamless connectivity and flexible scalability through subscription services, all backed by robust security. With a reputation built on decades of unlocking potential and helping people adapt to the changing workplace, Zykel Networks has earned the trust of over 1 million businesses across 150 markets.

USG FLEX 50HP Security Firewall

USG FLEX 50HP

- Smart Sync enables seamless cloud and on-premises management
- Integrated with Zykel Nebula for centralized network control
- Works with SecuReporter for real-time visibility and analytics
- SecuPilot AI engine enhances threat detection and response
- Strengthens overall cybersecurity protection for SMB environments

[Learn More](#)





ZyXel Networks

BE11000 WiFi 7 Triple - Radio NebulaFlex Access Point

NWA130BE

- Built for modern workplaces with WiFi 7 performance
- Delivers speeds of up to 11 Gbps with enhanced network capacity
- Powered by a Qualcomm quad-core CPU for high efficiency
- Advanced RF design reduces interference between 5 GHz and 6 GHz bands
- Built-in 4G/5G filtering ensures stable, uninterrupted wireless connectivity

[Learn More](#)





ZyXel Networks

8-port 2.5GbE Smart Managed PoE Switch with 2 SFP+ Uplink

XMG1915-10EP

- Built for 4K/8K, VR/AR, and AI applications
- Delivers up to 2.5× faster performance over existing cabling
- Equipped with 8× 2.5G ports and 2× 10G SFP+ uplinks
- Supports PoE++ single-cable deployment for APs and devices
- Future-ready, energy-efficient design for SMBs

[Learn More](#)





ZyXel Networks

Nebula 5G BE7200 Indoor Router FWA515

- Up to 7 Gbps 5G and WiFi 7 performance
- Multi-Link Operation (MLO) for stable, low-latency experience
- Supports up to 64 devices for hybrid work and retail use
- Plug-and-play 5G setup with SIM card, no cabling needed
- Dual WAN failover between 5G and Ethernet for continuous connectivity



[Learn More](#)



TAIWAN EXCELLENCE

www.taiwanexcellence.org/en

Organized by :



TITA



TAITRA